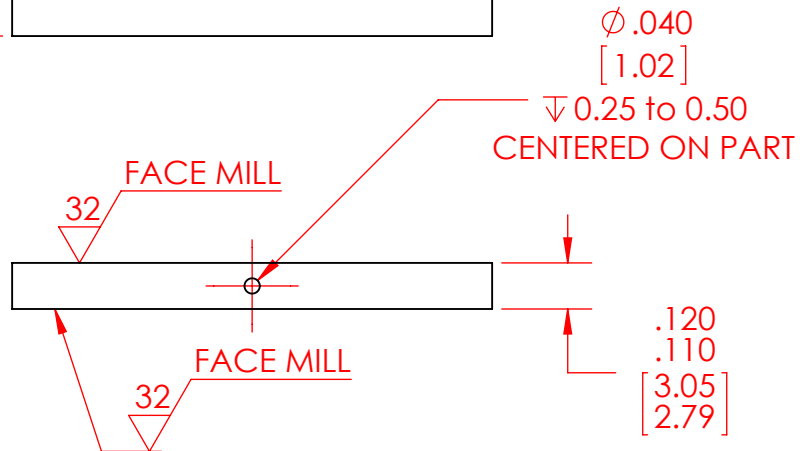
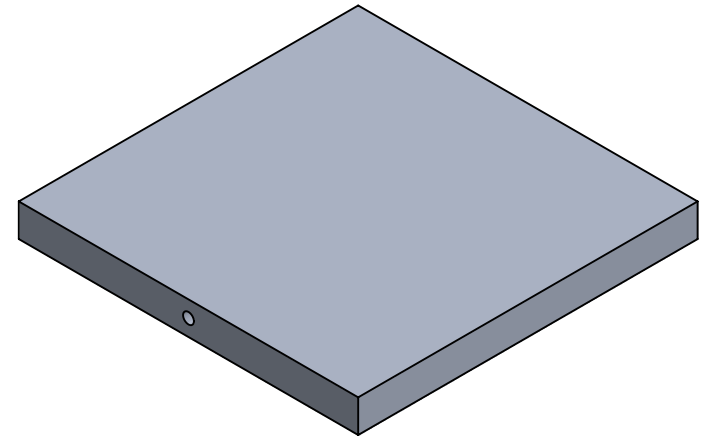
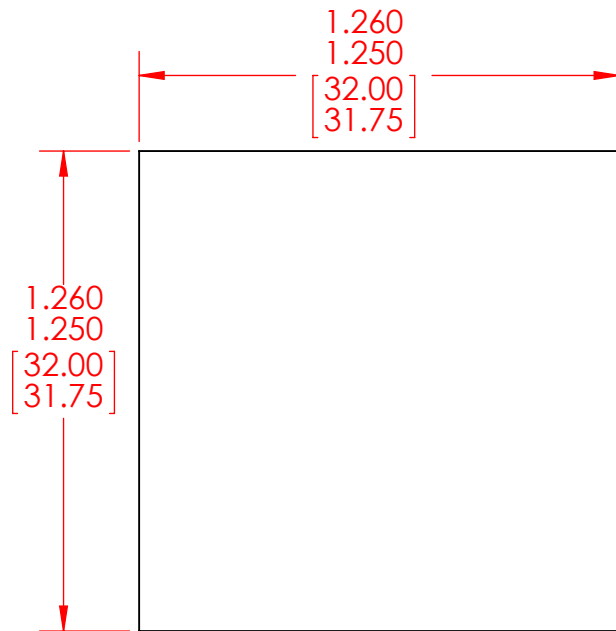


B

B



NOTES:

1. DIMENSIONS IN INCHES AND [MM].
2. MATERIAL: ALUMINUM 6061.

A

A

PROPRIETARY AND CONFIDENTIAL
THE INFORMATION CONTAINED IN THIS DRAWING IS THE SOLE PROPERTY OF CUSTOM THERMOELECTRIC, LLC. ANY REPRODUCTION IN PART OR AS A WHOLE WITHOUT THE WRITTEN PERMISSION OF CUSTOM THERMOELECTRIC, LLC IS PROHIBITED.

		UNLESS OTHERWISE SPECIFIED:
		DIMENSIONS ARE IN INCHES
		TOLERANCES:
		FRACTIONAL $\pm 1/32$
		ANGULAR: MACH ± 1 BEND \pm
		TWO PLACE DECIMAL $\pm .01$
		THREE PLACE DECIMAL $\pm .005$
		INTERPRET GEOMETRIC TOLERANCING PER:
		MATERIAL
		FINISH
NEXT ASSY	USED ON	
APPLICATION		DO NOT SCALE DRAWING

	NAME	DATE
DRAWN	MASTERS	5/27/2017
CHECKED		
ENG APPR.		
MFG APPR.		
Q.A.		
COMMENTS:		

 **CUSTOM THERMOELECTRIC**
Your Thermoelectric Partner

11941 INDUSTRIAL PARK RD STE 5
BISHOPVILLE, MD 21813
PH 443-926-9135 FAX 443-926-9137

TITLE:

**COLD PLATE
ALUMINUM
1.25 x 1.25 x 0.12"**

SIZE	DWG. NO.	REV
A	CP-1.25-1.25-AL-01_PUBLIC	B
SCALE: 2:1	WEIGHT:	SHEET 1 OF 1

2

1