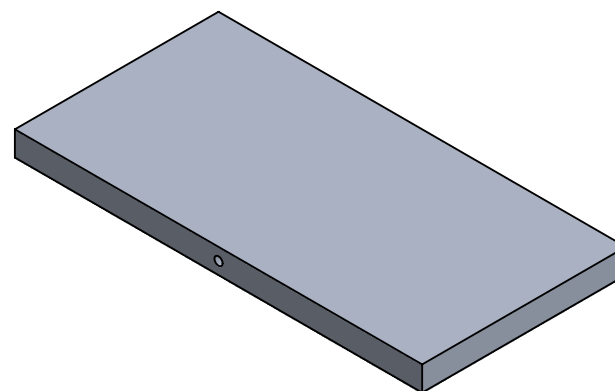
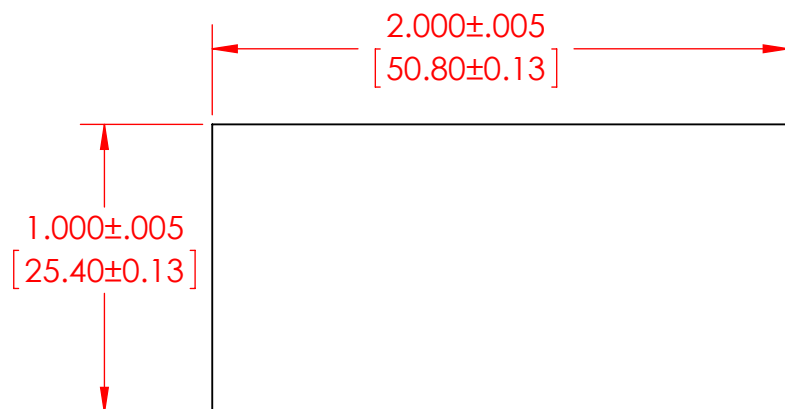
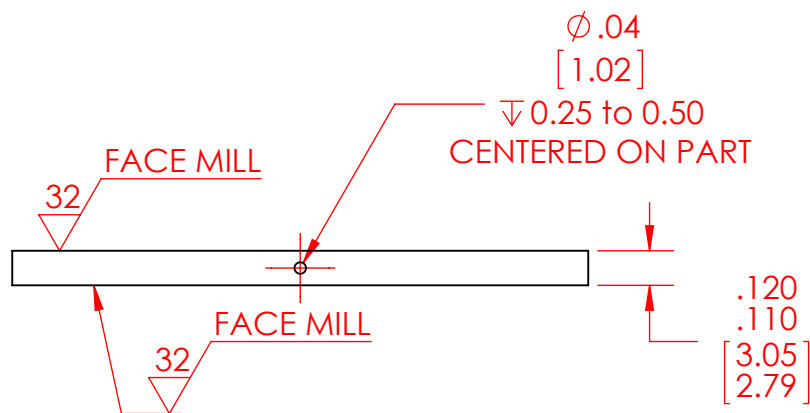


B



B



- NOTES:
1. DIMENSIONS IN INCHES AND [MM].
 2. MATERIAL: ALUMINUM 6061.

A

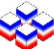
A

PROPRIETARY AND CONFIDENTIAL

THE INFORMATION CONTAINED IN THIS DRAWING IS THE SOLE PROPERTY OF CUSTOM THERMOELECTRIC, LLC. ANY REPRODUCTION IN PART OR AS A WHOLE WITHOUT THE WRITTEN PERMISSION OF CUSTOM THERMOELECTRIC, LLC IS PROHIBITED.

		UNLESS OTHERWISE SPECIFIED:
		DIMENSIONS ARE IN INCHES
		TOLERANCES:
		FRACTIONAL ± 1/32
		ANGULAR: MACH ± 1 BEND ±
		TWO PLACE DECIMAL ± .01
		THREE PLACE DECIMAL ± .005
		INTERPRET GEOMETRIC
		TOLERANCING PER:
		MATERIAL
		FINISH
NEXT ASSY	USED ON	
APPLICATION		DO NOT SCALE DRAWING

	NAME	DATE
DRAWN	MASTERS	5/28/2017
CHECKED		
ENG APPR.		
MFG APPR.		
Q.A.		
COMMENTS:		

		CUSTOM THERMOELECTRIC		11941 INDUSTRIAL PARK RD STE 5 BISHOPVILLE, MD 21813 PH 443-926-9135 FAX 443-926-9137	
		Your Thermoelectric Partner			
TITLE: COLD PLATE ALUMINUM 2.00 x 1.00 x 0.12"					
SIZE		DWG. NO.		REV	
A		CP-2.00-1.00-AL-01_PUBLIC		A	
SCALE: 2:1		WEIGHT:		SHEET 1 OF 1	

2

1