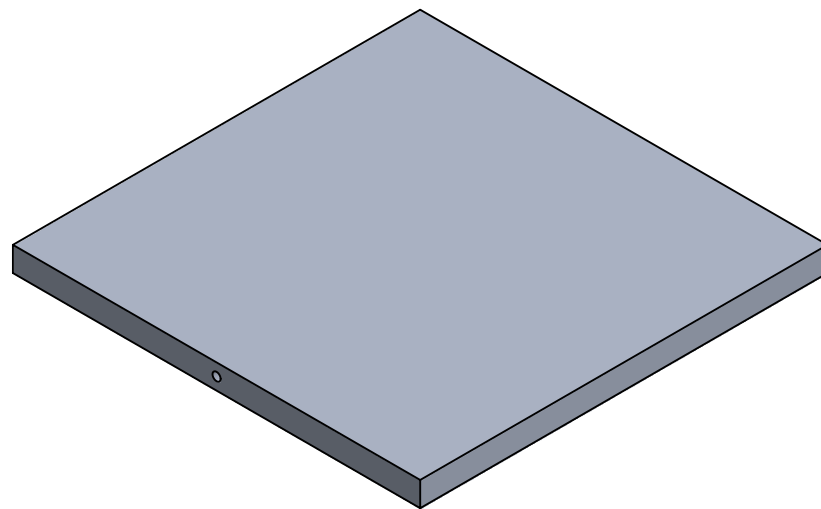
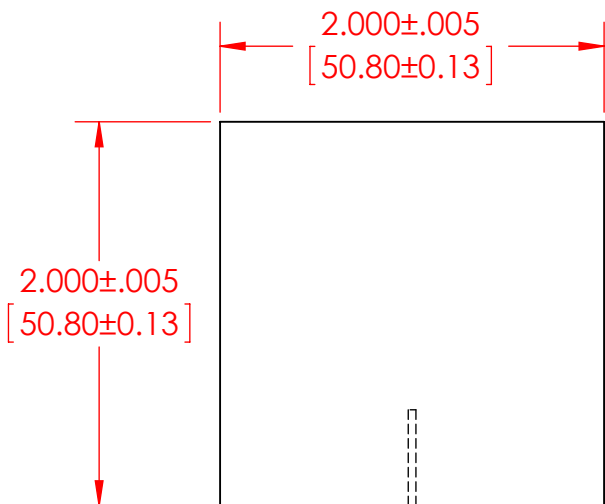
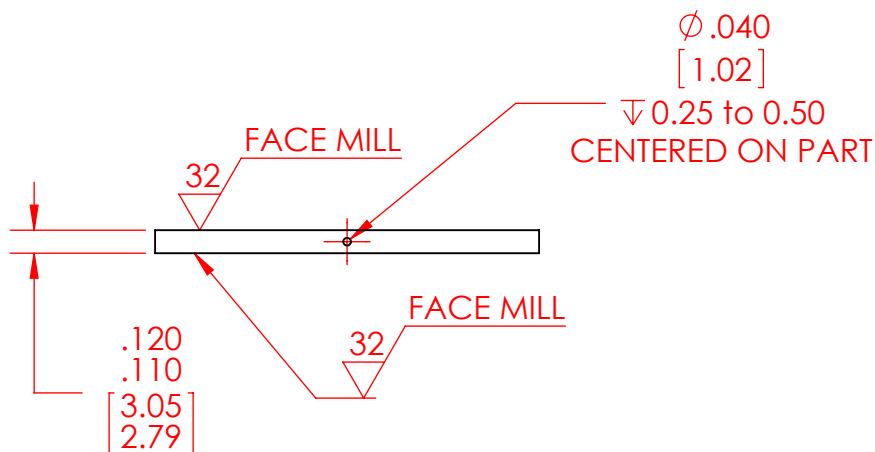


B



B



NOTES:

1. DIMENSIONS IN INCHES AND [MM].
2. MATERIAL: ALUMINUM 6061.

A

A

PROPRIETARY AND CONFIDENTIAL
THE INFORMATION CONTAINED IN THIS DRAWING IS THE SOLE PROPERTY OF CUSTOM THERMOELECTRIC, LLC. ANY REPRODUCTION IN PART OR AS A WHOLE WITHOUT THE WRITTEN PERMISSION OF CUSTOM THERMOELECTRIC, LLC IS PROHIBITED.

		UNLESS OTHERWISE SPECIFIED:		NAME	DATE
		DIMENSIONS ARE IN INCHES	DRAWN	MASTERS	5/28/2017
		TOLERANCES:	CHECKED		
		FRACTIONAL $\pm 1/32$	ENG APPR.		
		ANGULAR: MACH ± 1	MFG APPR.		
		TWO PLACE DECIMAL $\pm .01$	Q.A.		
		THREE PLACE DECIMAL $\pm .005$	COMMENTS:		
		INTERPRET GEOMETRIC TOLERANCING PER:			
		MATERIAL			
NEXT ASSY	USED ON	FINISH			
	APPLICATION	DO NOT SCALE DRAWING			

 **CUSTOM THERMOELECTRIC**
Your Thermoelectric Partner

11941 INDUSTRIAL PARK RD STE 5
BISHOPVILLE, MD 21813
PH 443-926-9135 FAX 443-926-9137

TITLE:
**COLD PLATE
ALUMINUM
2.00 x 2.00 x 0.12"**

SIZE	DWG. NO.	REV
A	CP-2.00-2.00-AL-01_PUBLIC	A
SCALE: 1:1	WEIGHT:	SHEET 1 OF 1

2

1