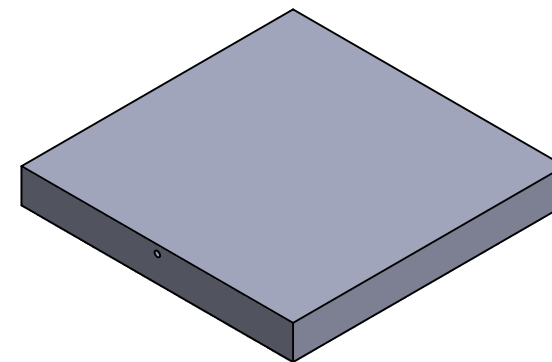
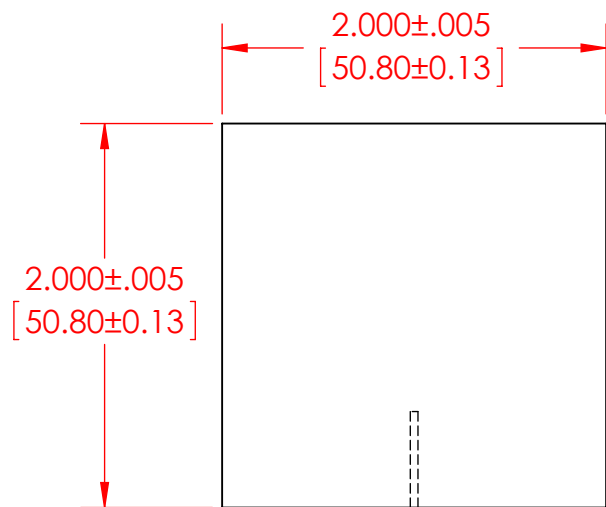


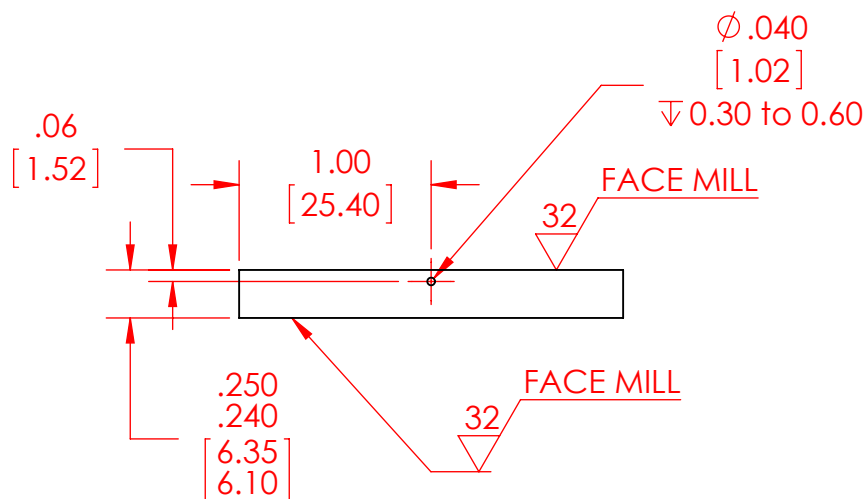
2

1

B



B




- NOTES:
1. DIMENSIONS IN INCHES AND [MM].
  2. MATERIAL: ALUMINUM 6061.

A

A

**PROPRIETARY AND CONFIDENTIAL**  
 THE INFORMATION CONTAINED IN THIS DRAWING IS THE SOLE PROPERTY OF CUSTOM THERMOELECTRIC, LLC. ANY REPRODUCTION IN PART OR AS A WHOLE WITHOUT THE WRITTEN PERMISSION OF CUSTOM THERMOELECTRIC, LLC IS PROHIBITED.

		UNLESS OTHERWISE SPECIFIED:	NAME	DATE	 <b>CUSTOM THERMOELECTRIC</b> <i>Your Thermoelectric Partner</i>	11941 INDUSTRIAL PARK RD STE 5 BISHOPVILLE, MD 21813 PH 443-926-9135 FAX 443-926-9137	
		DIMENSIONS ARE IN INCHES TOLERANCES: FRACTIONAL $\pm 1/32$ ANGULAR: MACH $\pm 1$ BEND $\pm$ TWO PLACE DECIMAL $\pm .01$ THREE PLACE DECIMAL $\pm .005$	DRAWN	MASTERS		5/28/2017	TITLE: <b>COLD PLATE        ALUMINUM        2.00 x 2.00 x 0.25"</b>
		INTERPRET GEOMETRIC TOLERANCING PER:	CHECKED			SIZE DWG. NO. REV	
		MATERIAL	ENG APPR.			<b>A</b> CP-2.00-2.00-AL-02_PUBLIC <b>A</b>	
NEXT ASSY	USED ON	FINISH	MFG APPR.			SCALE: 1:1 WEIGHT: SHEET 1 OF 1	
APPLICATION		DO NOT SCALE DRAWING	Q.A.				
			COMMENTS:				

2

1