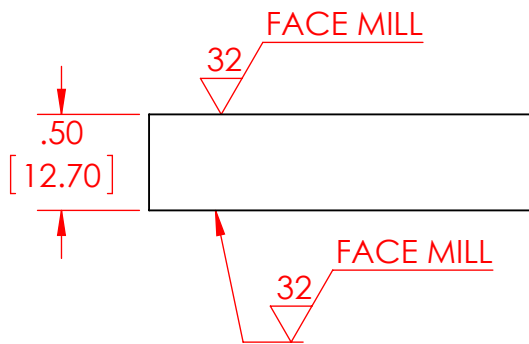
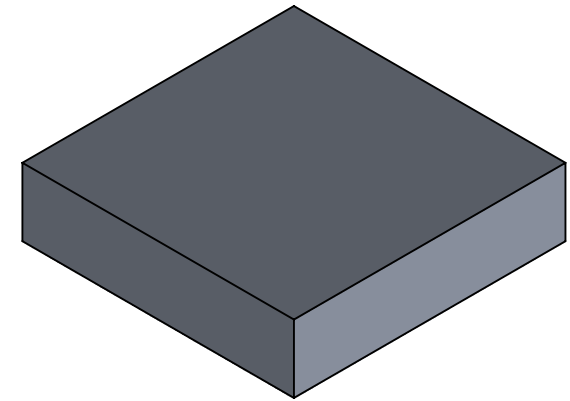
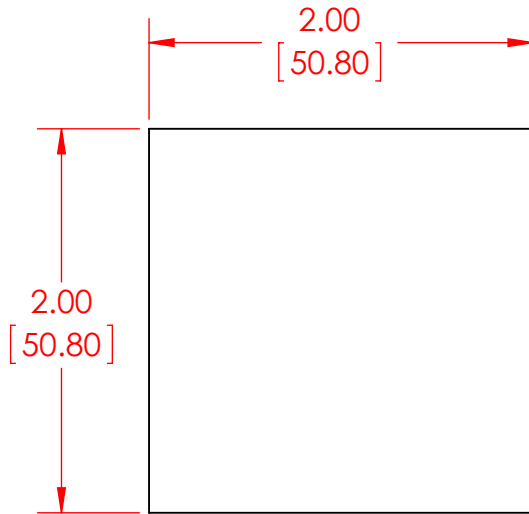


B

B



- NOTES:
1. DIMENSIONS IN INCHES AND [MM].
 2. MATERIAL: ALUMINUM 6061.

A

A

PROPRIETARY AND CONFIDENTIAL

THE INFORMATION CONTAINED IN THIS DRAWING IS THE SOLE PROPERTY OF CUSTOM THERMOELECTRIC, LLC. ANY REPRODUCTION IN PART OR AS A WHOLE WITHOUT THE WRITTEN PERMISSION OF CUSTOM THERMOELECTRIC, LLC IS PROHIBITED.

		UNLESS OTHERWISE SPECIFIED:
		DIMENSIONS ARE IN INCHES
		TOLERANCES:
		FRACTIONAL $\pm 1/32$
		ANGULAR: MACH ± 1 BEND \pm
		TWO PLACE DECIMAL $\pm .01$
		THREE PLACE DECIMAL $\pm .005$
		INTERPRET GEOMETRIC TOLERANCING PER:
		MATERIAL
NEXT ASSY	USED ON	FINISH
APPLICATION		DO NOT SCALE DRAWING

	NAME	DATE
DRAWN	MASTERS	5/28/2017
CHECKED		
ENG APPR.		
MFG APPR.		
Q.A.		
COMMENTS:		

 **Custom THERMOELECTRIC**
Your Thermoelectric Partner

11941 INDUSTRIAL PARK RD STE 5
BISHOPVILLE, MD 21813
PH 443-926-9135 FAX 443-926-9137

TITLE:

EXTENDER BLOCK

ALUMINUM

2.00 x 2.00 x 0.50"

SIZE	DWG. NO.	REV
A	EB-2.00-2.00-0.50-AL_PUBLIC	A
SCALE: 1:1	WEIGHT:	SHEET 1 OF 1

2

1