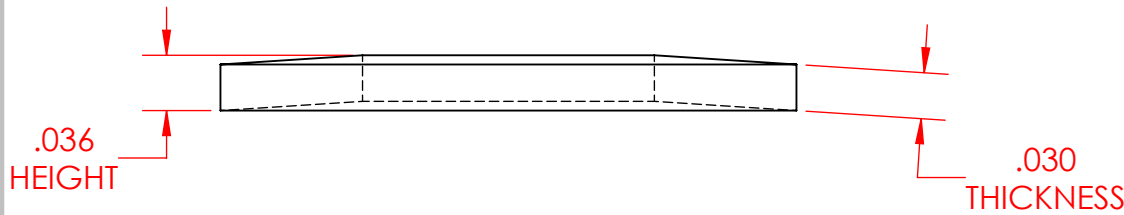
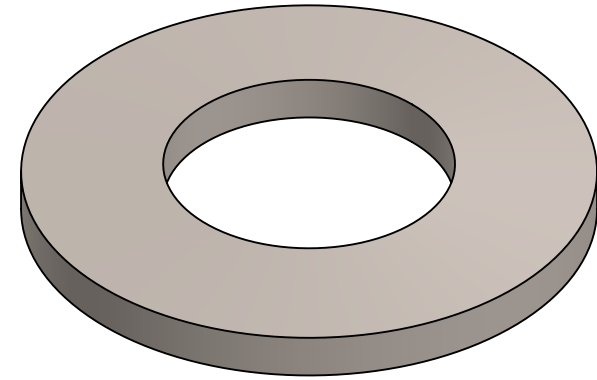
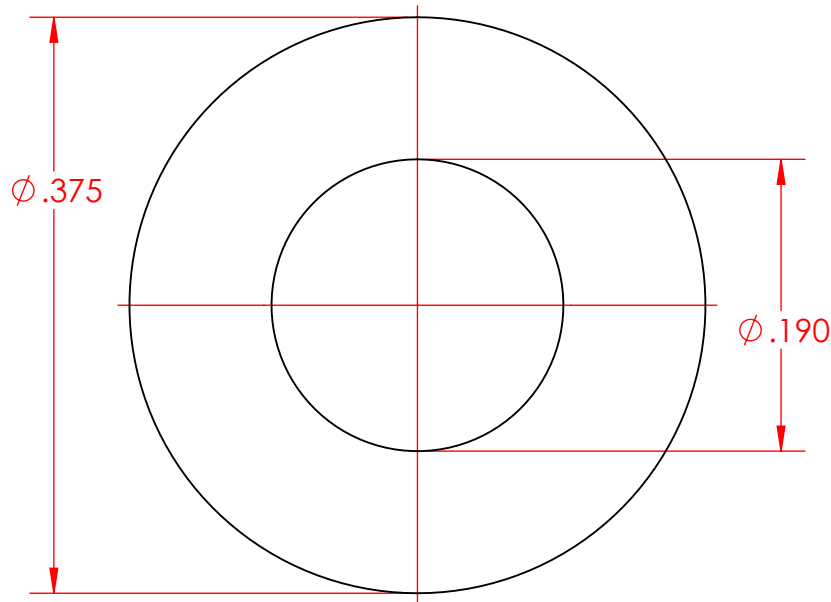


2

1

B

B



NOTES:  
 1. MATERIAL: 302 STAINLESS STEEL

A

A

**PROPRIETARY AND CONFIDENTIAL**  
 THE INFORMATION CONTAINED IN THIS DRAWING IS THE SOLE PROPERTY OF CUSTOM THERMOELECTRIC, LLC. ANY REPRODUCTION IN PART OR AS A WHOLE WITHOUT THE WRITTEN PERMISSION OF CUSTOM THERMOELECTRIC, LLC IS PROHIBITED.

		UNLESS OTHERWISE SPECIFIED:		NAME	DATE
		DIMENSIONS ARE IN INCHES	DRAWN	MASTERS	5/29/2017
		TOLERANCES:	CHECKED		
		FRACTIONAL $\pm 1/32$	ENG APPR.		
		ANGULAR: MACH $\pm 1$	MFG APPR.		
		TWO PLACE DECIMAL $\pm .01$	Q.A.		
		THREE PLACE DECIMAL $\pm .005$	COMMENTS:		
		INTERPRET GEOMETRIC TOLERANCING PER:			
		MATERIAL			
		FINISH			
NEXT ASSY	USED ON				
APPLICATION		DO NOT SCALE DRAWING			

 **CUSTOM THERMOELECTRIC**  
*Your Thermoelectric Partner*  
 11941 INDUSTRIAL PARK RD STE 5  
 BISHOPVILLE, MD 21813  
 PH 443-926-9135 FAX 443-926-9137

TITLE:  
**BELLEVILLE WASHER  
 #8 HD STAINLESS**

SIZE	DWG. NO.	REV
<b>A</b>	FST-BW-08H_belleville washer	<b>A</b>
SCALE: 8:1	WEIGHT:	SHEET 1 OF 1

2

1