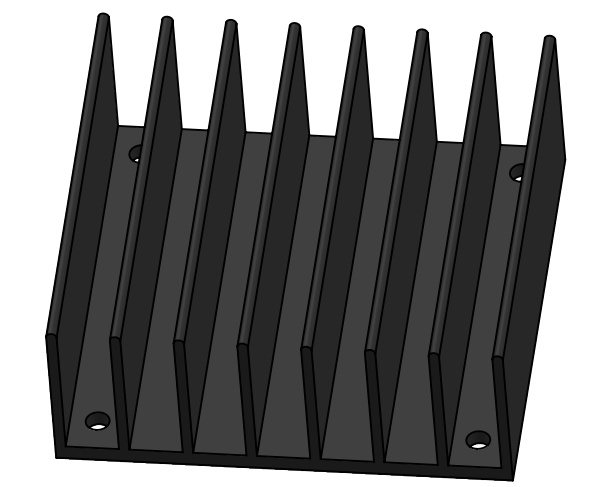
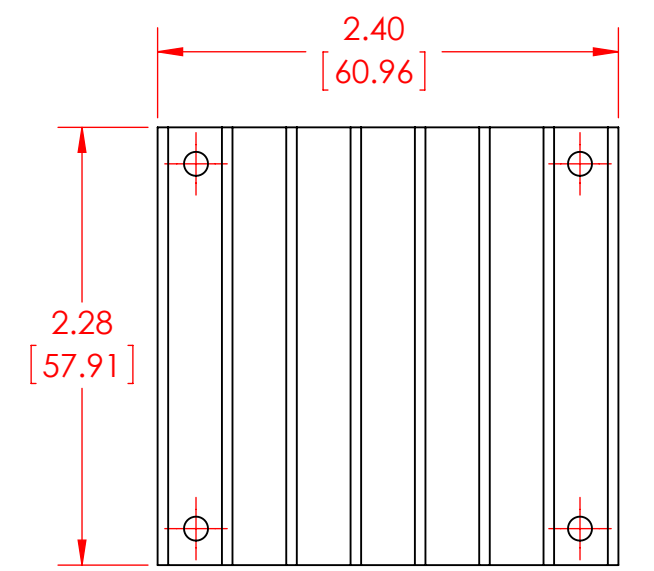


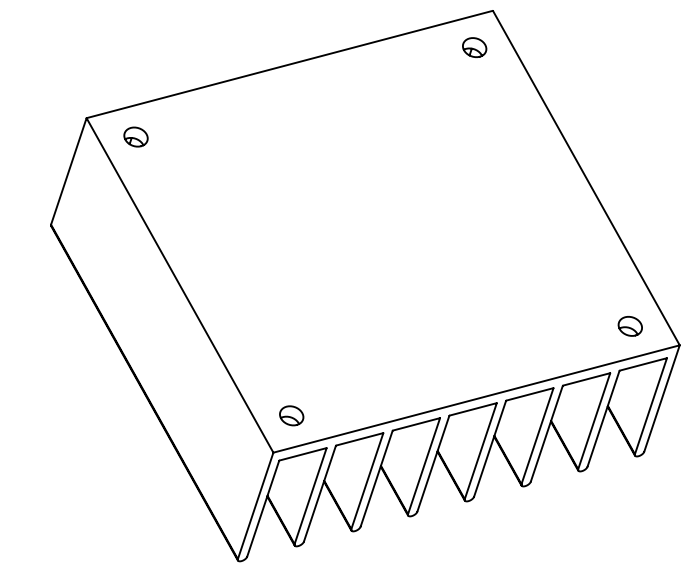
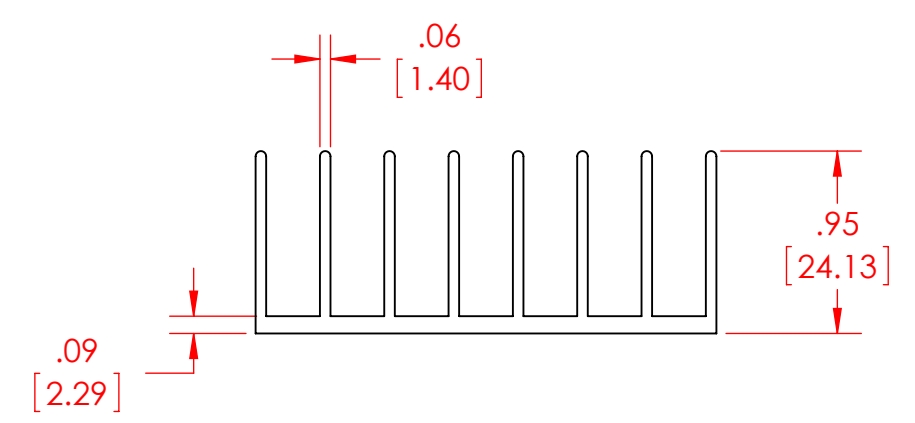
4 3 2 1

B

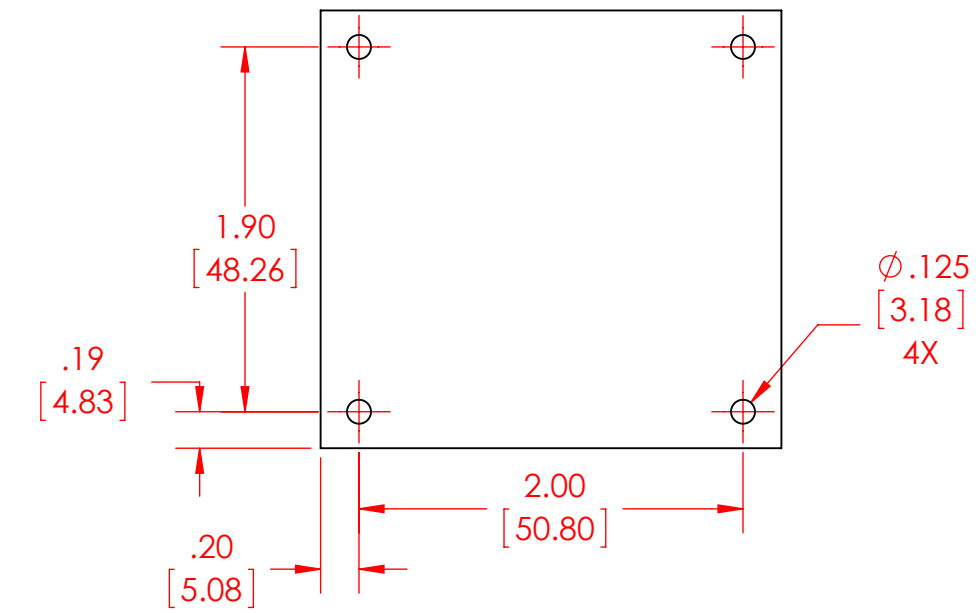


B


A



A



- NOTES:**
1. DIMENSIONS ARE IN INCHES AND [MM].
 2. MATERIAL: ALUMINIUM 6xxx SERIES.
 3. BLACK ANODIZED.

PROPRIETARY AND CONFIDENTIAL THE INFORMATION CONTAINED IN THIS DRAWING IS THE SOLE PROPERTY OF CUSTOM THERMOELECTRIC, LLC. ANY REPRODUCTION IN PART OR AS A WHOLE WITHOUT THE WRITTEN PERMISSION OF CUSTOM THERMOELECTRIC, LLC IS PROHIBITED.	UNLESS OTHERWISE SPECIFIED:	NAME	DATE	 11941 Industrial Park Road, STE 5 Bishopville, MD 21813	
	DIMENSIONS ARE IN INCHES	DRAWN	AEM		11/02/2017
	TOLERANCES: FRACTIONAL ±.03 ANGULAR: MACH ±0°30' BEND ±1° TWO PLACE DECIMAL ±.01 THREE PLACE DECIMAL ±.005 SURFACES TO BE PERPENDICULAR WITHIN .005 T.I.R. SURFACES TO BE PARALLEL WITHIN .005 T.I.R. HOLE ANGULAR TOLERANCE ±0°5'	CHECKED			
	INTERPRET GEOMETRIC TOLERANCING PER: ANSI Y14.5	ENG APPR.			
	MATERIAL	MFG APPR.			
FINISH	Q.A.			TITLE: HEAT SINK EXTRUDED, 8 FIN 2.28 x 2.40 x 0.95"	
DO NOT SCALE DRAWING	COMMENTS:				SIZE B DWG. NO. HS-2.28-2.40-0.95 REV A
					SCALE: 1:1 WEIGHT: SHEET 1 OF 1

4 3 2 1