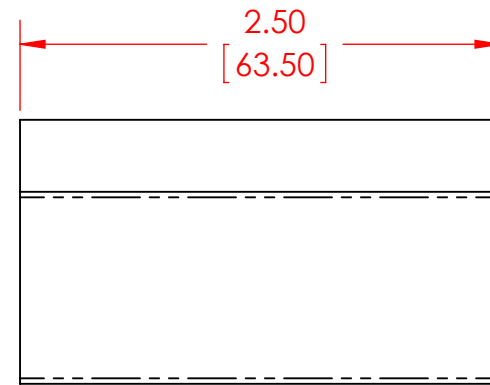
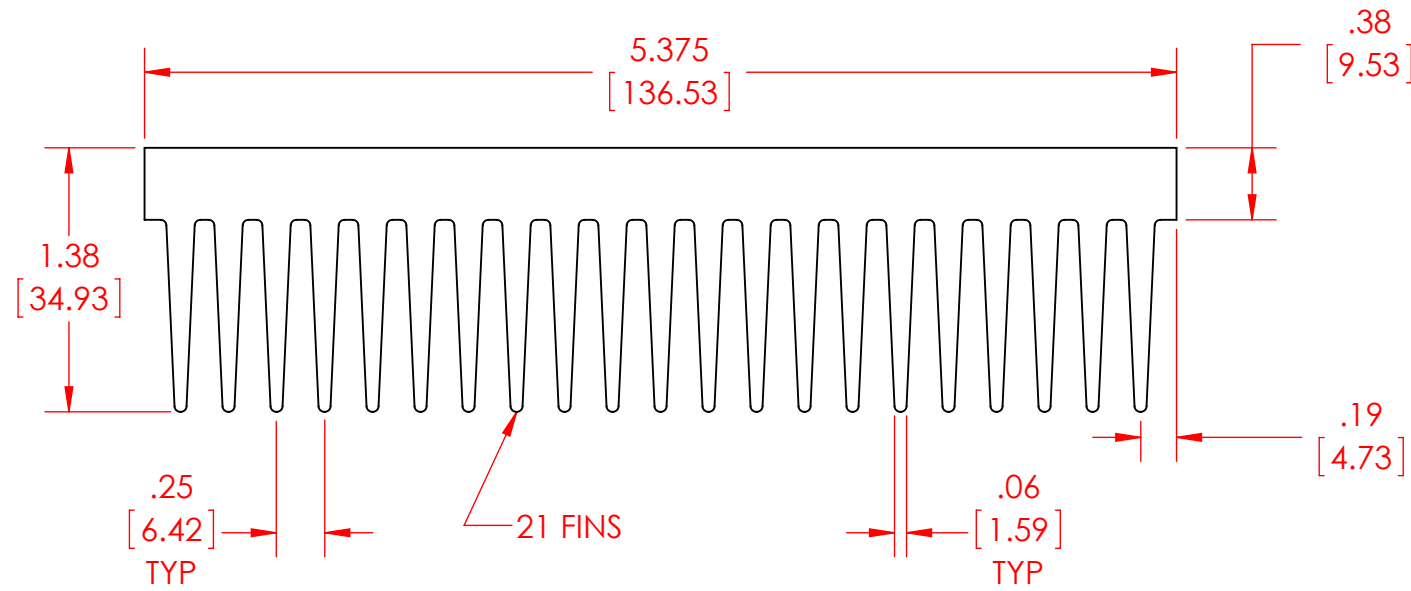
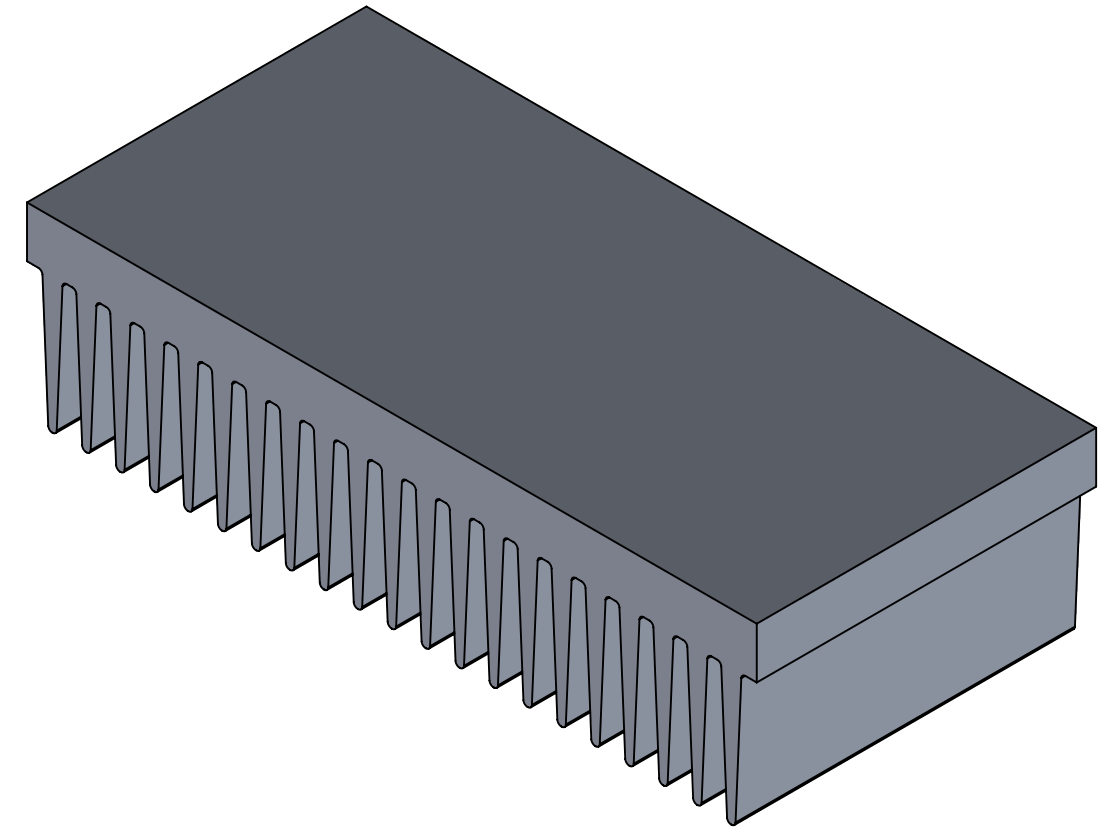
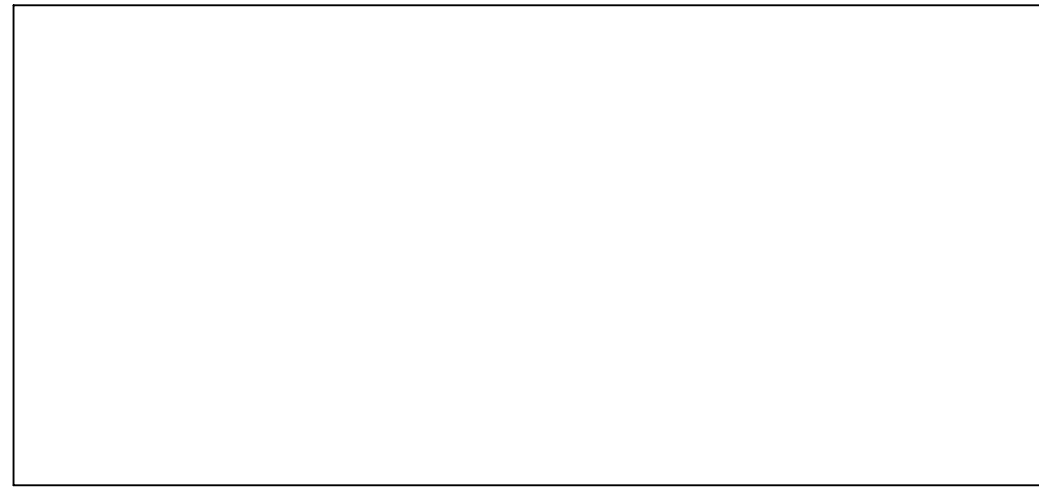


4

3

2

1



- NOTES:**
1. DIMENSIONS ARE IN INCHES AND [MM].
  2. MATERIAL: ALUMINUM 6063 T5.
  3. REMOVE ALL BURRS AND SHARP EDGES.

**PROPRIETARY AND CONFIDENTIAL**

THE INFORMATION CONTAINED IN THIS DRAWING IS THE SOLE PROPERTY OF CUSTOM THERMOELECTRIC, LLC. ANY REPRODUCTION IN PART OR AS A WHOLE WITHOUT THE WRITTEN PERMISSION OF CUSTOM THERMOELECTRIC, LLC IS PROHIBITED.

UNLESS OTHERWISE SPECIFIED:

DIMENSIONS ARE IN INCHES  
 TOLERANCES:  
 FRACTIONAL ±.03  
 ANGULAR: MACH ±0°30' BEND ±1°  
 TWO PLACE DECIMAL ±.01  
 THREE PLACE DECIMAL ±.005  
 SURFACES TO BE PERPENDICULAR WITHIN .005 T.I.R.  
 SURFACES TO BE PARALLEL WITHIN .005 T.I.R.  
 HOLE ANGULAR TOLERANCE ±0°5'

INTERPRET GEOMETRIC TOLERANCING PER: ANSI Y14.5

MATERIAL

FINISH

	NAME	DATE
DRAWN	AEM	10/09/2014
CHECKED		
ENG APPR.		
MFG APPR.		
Q.A.		
COMMENTS:		

**CUSTOM THERMOELECTRIC**  
*Your Thermoelectric Partner*  
 11941 Industrial Park Road, STE 5  
 Bishopville, MD 21813

TITLE:  
**HEAT SINK  
 EXTRUDED, 21 FIN  
 2.50 x 5.38 x 1.38"**

SIZE	DWG. NO.	REV
<b>B</b>	HS-2.5-5.4-1.4-01_PUBLIC	<b>A</b>

SCALE: 1:1 WEIGHT: SHEET 1 OF 1

REV.	DATE	DESCRIPTION	REV.	DATE	DESCRIPTION
A	10/09/2014	INITIAL RELEASE			

4

3

2

1

B

B

A

A