

4

3

2

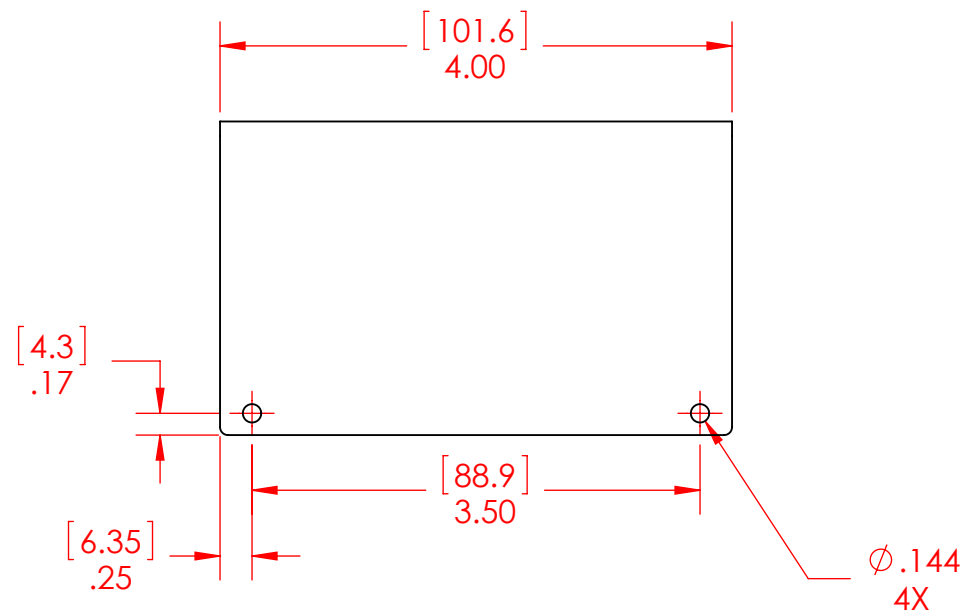
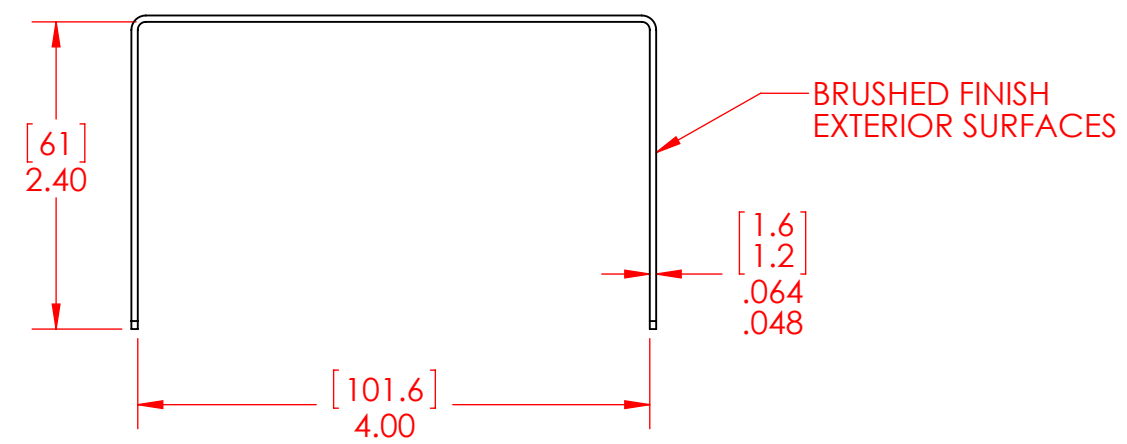
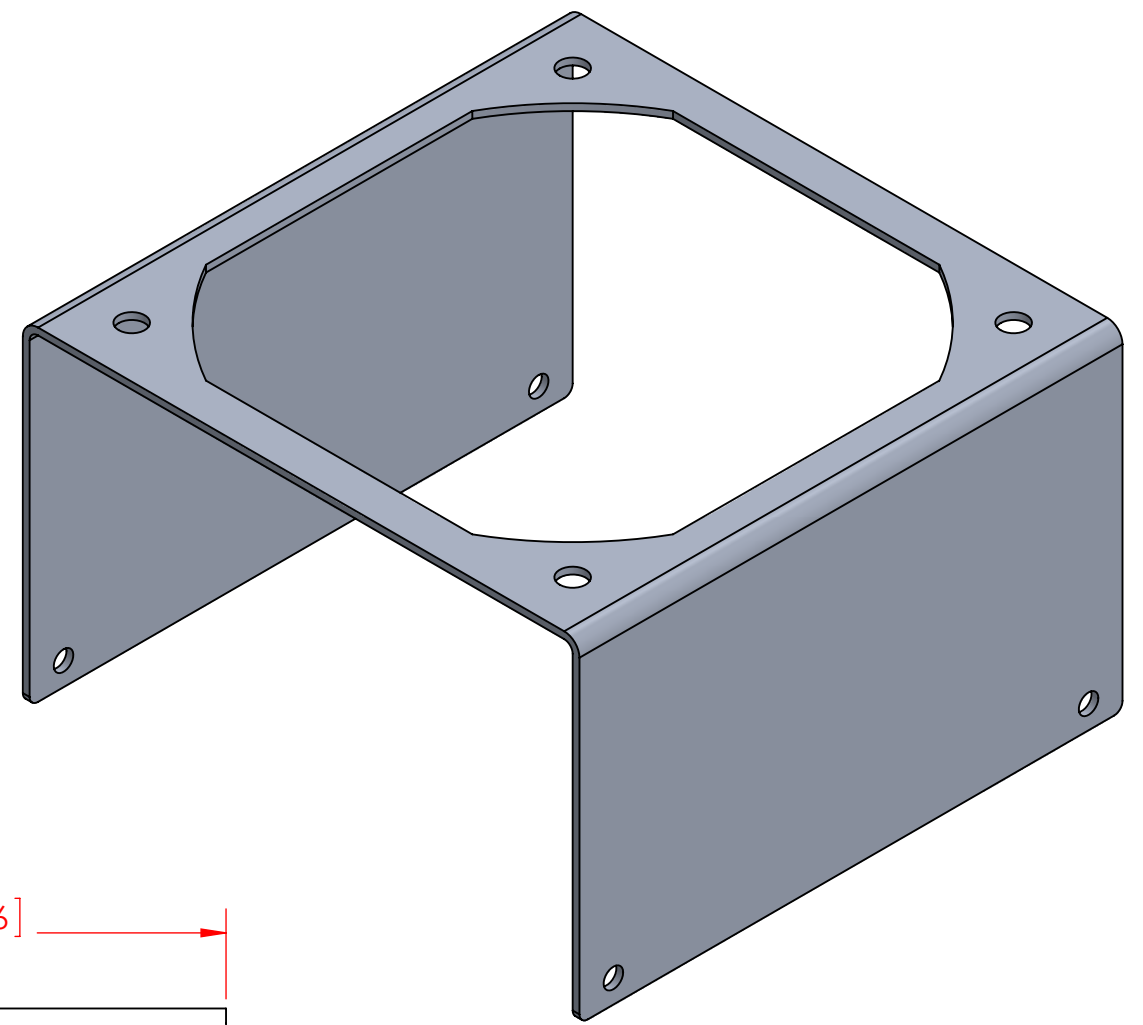
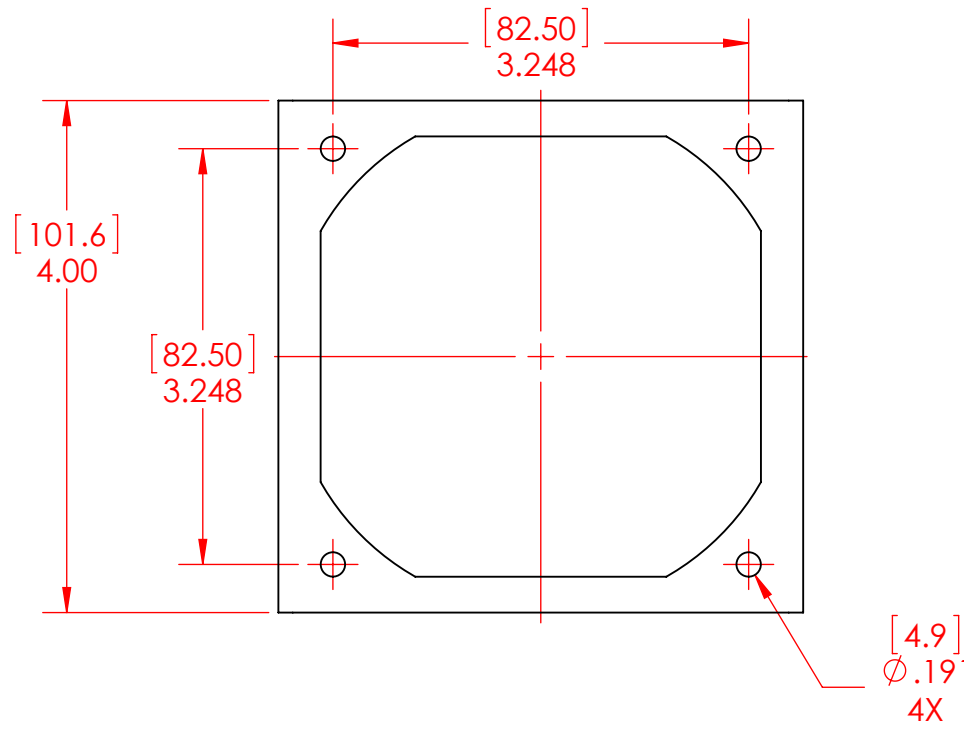
1

B

B

A

A



NOTES:

1. DIMENSIONS IN INCHES AND [MM].
2. MATERIAL: ALUMINUM 5052 OR EQUIVALENT.
3. FINISH: BRUSHED METAL ON EXTERNAL SURFACES.
4. ALL DIMENSIONS ARE AFTER ANY BENDING OPERATIONS.

PROPRIETARY AND CONFIDENTIAL

THE INFORMATION CONTAINED IN THIS DRAWING IS THE SOLE PROPERTY OF CUSTOM THERMOELECTRIC, LLC. ANY REPRODUCTION IN PART OR AS A WHOLE WITHOUT THE WRITTEN PERMISSION OF CUSTOM THERMOELECTRIC, LLC IS PROHIBITED.

UNLESS OTHERWISE SPECIFIED:

DIMENSIONS ARE IN INCHES
TOLERANCES:
FRACTIONAL ±.03
ANGULAR: MACH ±0°30' BEND ±1°
TWO PLACE DECIMAL ±.01
THREE PLACE DECIMAL ±.005
SURFACES TO BE PERPENDICULAR WITHIN .005 T.I.R.
SURFACES TO BE PARALLEL WITHIN .005 T.I.R.
HOLE ANGULAR TOLERANCE ±0°5'

INTERPRET GEOMETRIC TOLERANCING PER: ANSI Y14.5

MATERIAL

FINISH

DO NOT SCALE DRAWING

	NAME	DATE
DRAWN	AEM	5/24/2017
CHECKED		
ENG APPR.		
MFG APPR.		
Q.A.		
COMMENTS:		

CUSTOM THERMOELECTRIC 11941 Industrial Park
Your Thermoelectric Partner Road, STE 5
Bishopville, MD 21813

TITLE:
**FAN BRACKET
FOR HEAT SINK
4.0 x 4.0 x 2.45"**

SIZE **B** DWG. NO. HSS-4.0-4.0-2.45_PUBLIC_REV-A REV **A**

SCALE: 1:2 WEIGHT: SHEET 1 OF 1

REV.	DATE	DESCRIPTION	REV.	DATE	DESCRIPTION
A	5/24/2017	INITIAL RELEASE			

4

3

2

1