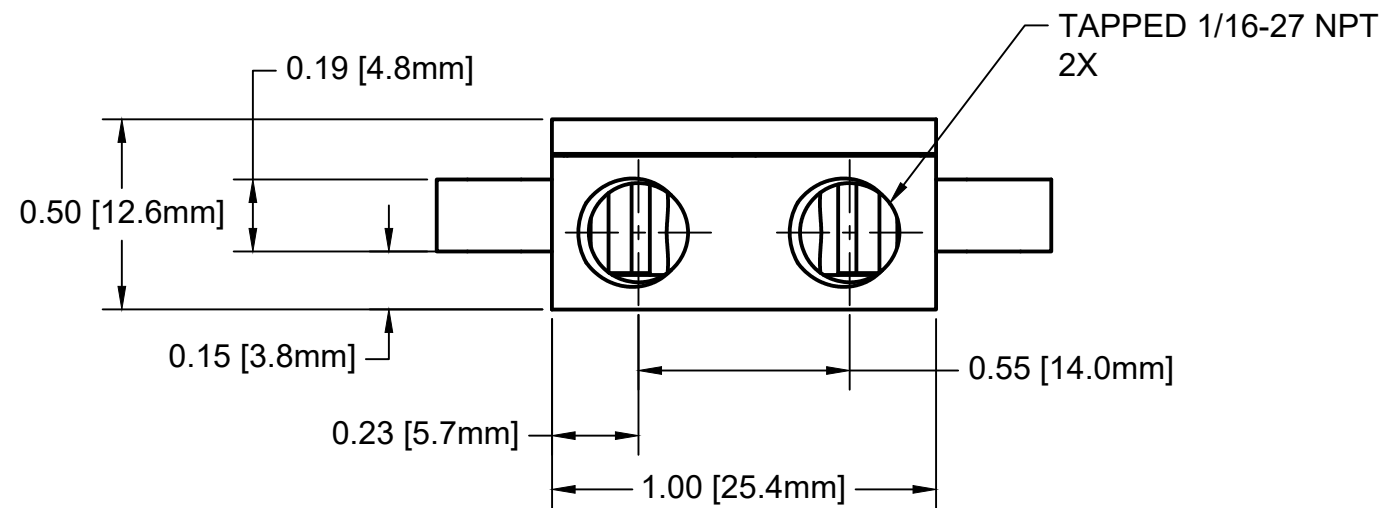
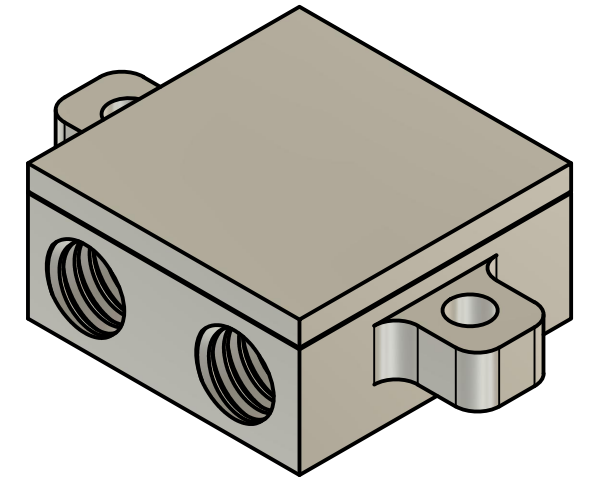


SECTION A-A  
SCALE 2:1



BRAZE CODES (ADD SUFFIX TO END OF PART NUMBER)			
SUFFIX	DESCRIPTION	MAX SERVICE TEMP	RoHS COMPLIANT
-01	DEFAULT SnPb ALLOY	125°C	NO
-R2	LEAD FREE 95-5 SnSb	200°C	YES, RoHS 3
-R3	LEAD FREE SAC305 SnAgCu	180°C	YES, RoHS 3
-R4	LEAD FREE BAg-7 ALLOY AgCuZnSn	316°C	YES, RoHS 3

- NOTES:
- MATERIAL: COPPER 110, 99.9% PURE
  - DIMENSIONS SHOWN ARE INCHES [MILLIMETERS]
  - ALL SURFACES CNC MACHINED
  - MOUNTING SURFACES ARE MACHINED TO A MINIMUM 32 µIN [0.8 µM] Ra SURFACE ROUGHNESS AND TO 0.001" [.0254MM] FLATNESS.
  - LEAK TESTED TO 75 PSI

**PROPRIETARY AND CONFIDENTIAL**

THE INFORMATION CONTAINED IN THIS DRAWING IS THE SOLE PROPERTY OF CUSTOM THERMOELECTRIC, LLC. ANY REPRODUCTION IN PART OR AS A WHOLE WITHOUT THE WRITTEN PERMISSION OF CUSTOM THERMOELECTRIC, LLC IS PROHIBITED.



Custom Thermoelectric, LLC  
11941 Industrial Park Road, STE 5  
Bishopville, MD 21813  
PH 443-926-9135 FX 443-926-9137  
temodule@customthermoelectric.com

TOLERANCES UNLESS OTHERWISE SPECIFIED	
MILLIMETERS	INCHES
X = ± 1mm	X.X = ± 0.1
X.X = ± 0.25mm	X.XX = ± 0.01
X.XX = ± 0.10mm	X.XXX = ± 0.005

TITLE  
**WATER BLOCK ASSEMBLY**  
**1.00 X 1.00 X 0.49"**  
COPPER

APPROVED	SIZE	CODE	DWG NO	REV
CHECKED	B		WBA-1.00-0.49-CU-01	B
DRAWN Andy Masters 12/21/2020	SCALE 2:1	WEIGHT	SHEET 1/1	