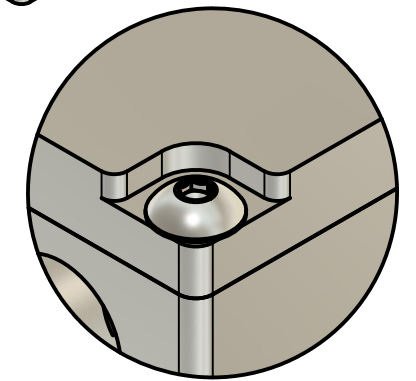
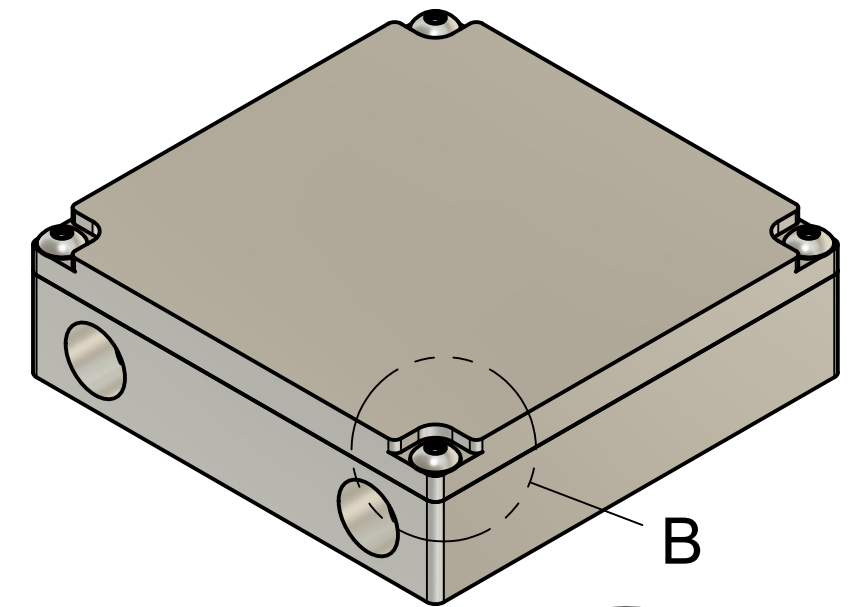
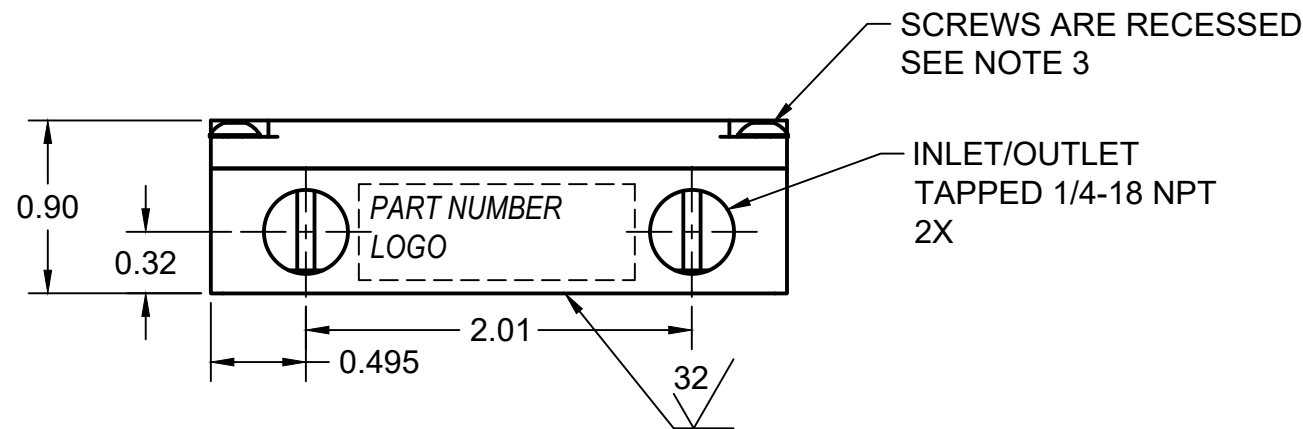


SECTION A-A  
SCALE 1:1



DETAIL B  
SCALE 2:1



SCREWS ARE RECESSED  
SEE NOTE 3

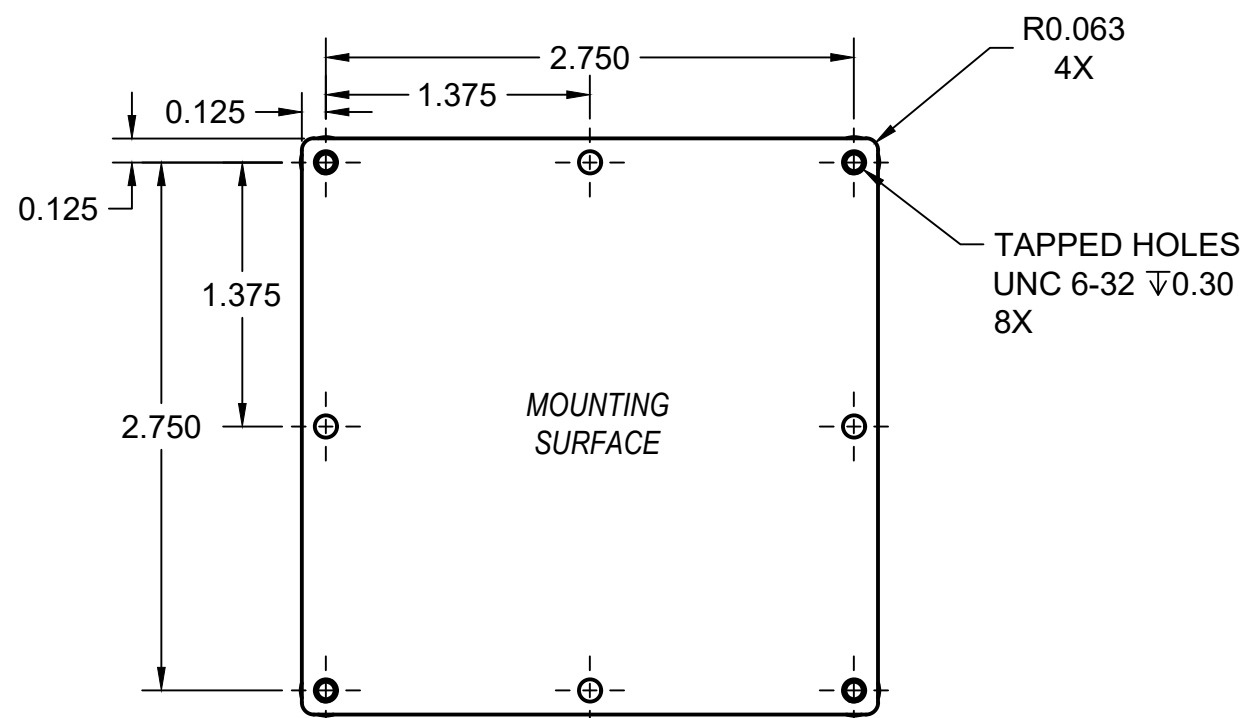
INLET/OUTLET  
TAPPED 1/4-18 NPT  
2X

**2ND GENERATION DESIGN**

- 7% LESS WEIGHT
- REDUCED PRESSURE LOSSES
- WIDER FLUID CHANNELS FOR IMPROVED FLOW
- IMPROVED O-RING DESIGN FOR BETTER SEAL
- RECESSED SCREW HEADS

**NOTES:**

1. MATERIAL: ALUMINUM 6061, ANODIZED CLEAR
2. ALL SURFACES ARE MACHINED
3. SCREWS: 4X 18-8 STAINLESS STEEL UNC 6-32 BUTTON HEAD  $\frac{3}{8}$ " LONG. SCREWS ARE INSERTED WITH MEDIUM STRENGTH THREAD LOCKER.
4. O-RING: BUNA-N IS STANDARD. VITON AND SILICONE O-RINGS AVAILABLE

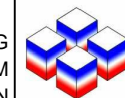


R0.063  
4X

TAPPED HOLES  
UNC 6-32  $\nabla$ 0.30  
8X

**PROPRIETARY AND CONFIDENTIAL**

THE INFORMATION CONTAINED IN THIS DRAWING IS THE SOLE PROPERTY OF CUSTOM THERMOELECTRIC, LLC. ANY REPRODUCTION IN PART OR AS A WHOLE WITHOUT THE WRITTEN PERMISSION OF CUSTOM THERMOELECTRIC, LLC IS PROHIBITED.



**CUSTOM THERMOELECTRIC**  
*Your Thermoelectric Partner*

Custom Thermoelectric, LLC  
11941 Industrial Park Road, STE 5  
Bishopville, MD 21813  
PH 443-926-9135 FX 443-926-9137  
temodule@customthermoelectric.com

TOLERANCES UNLESS OTHERWISE SPECIFIED	
MILLIMETERS	INCHES
X = ± 1mm	X.X = ± 0.1
X.X = ± 0.25mm	X.XX = ± 0.01
X.XX = ± 0.10mm	X.XXX = ± 0.005

TITLE

**WATER BLOCK ASSEMBLY**  
**3.00 x 3.00 x 0.90"**  
ALUMINUM, 2ND GENERATION

APPROVED	SIZE	CODE	DWG NO	REV
CHECKED	B		WBA-3.00-3.00-0.90-AL-2G	A
DRAWN Andy Masters 5/15/2020	SCALE 1:1	WEIGHT	SHEET 1/1	