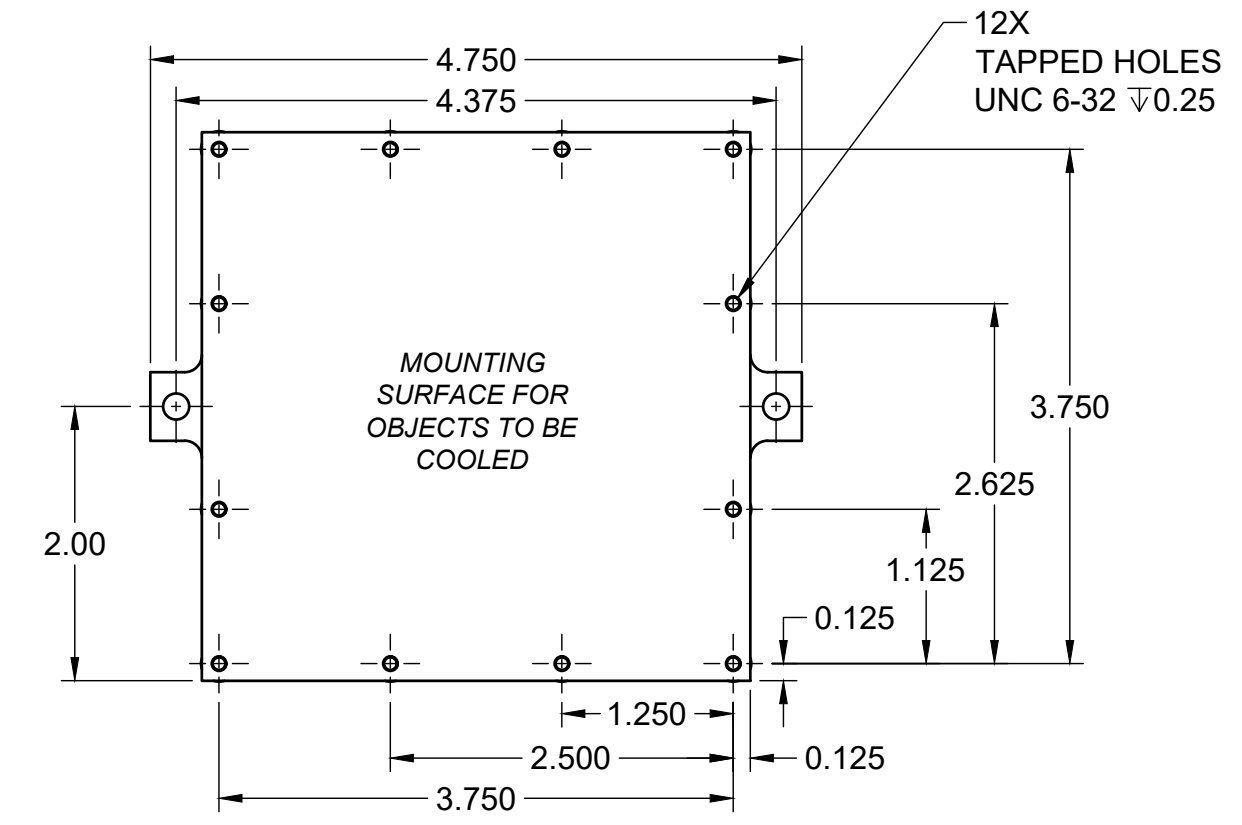
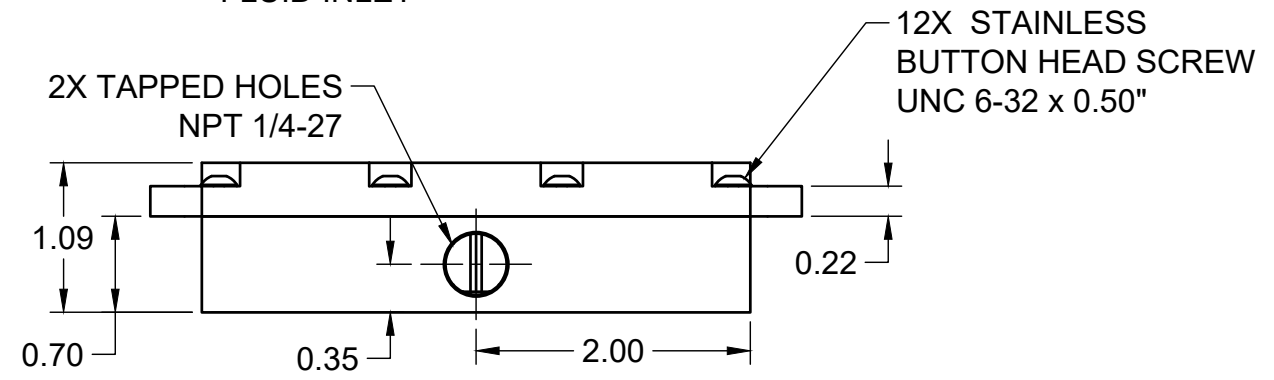
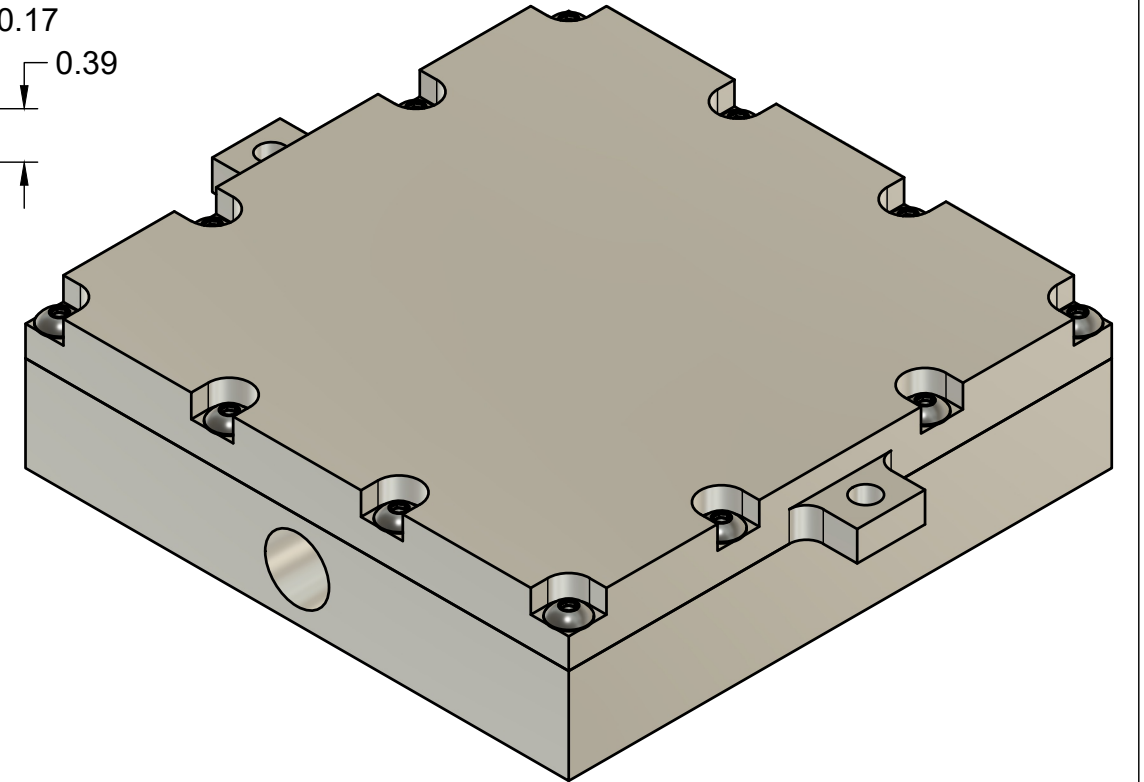


SECTION A-A
SCALE 1:1.4



- NOTES:**
1. DIMENSIONS IN INCHES
 2. MATERIAL: ALUM. 6061, CLEAR ANODIZED
 3. O-RING MATERIAL: DEFAULT IS BUNA-N. VITON OR SILICONE ARE OPTIONAL
 4. LEAK TESTED TO 70 PSI

REV	DESCRIPTION	DATE
B	ADDED 2 CLAMPING SCREWS FOR A TOTAL OF 12	5/18/2017
A	RELEASE	3/06/2009

REVISION HISTORY

PROPRIETARY AND CONFIDENTIAL
THE INFORMATION CONTAINED IN THIS DRAWING IS THE SOLE PROPERTY OF CUSTOM THERMOELECTRIC, LLC. ANY REPRODUCTION IN PART OR AS A WHOLE WITHOUT THE WRITTEN PERMISSION OF CUSTOM THERMOELECTRIC, LLC IS PROHIBITED.



Custom Thermoelectric, LLC
11941 Industrial Park Road, STE 5
Bishopville, MD 21813
PH 443-926-9135 FX 443-926-9137
temodule@customthermoelectric.com

TITLE
WATER BLOCK
4.0 x 4.0 x 1.09" [101.6 x 101.6 x 27.7mm]
COUNTERBORED COVER

TOLERANCES UNLESS OTHERWISE SPECIFIED

MILLIMETERS	INCHES
X = ± 1mm	X.X = ± 0.1
X.X = ± 0.25mm	X.XX = ± 0.01
X.XX = ± 0.10mm	X.XXX = ± 0.005

APPROVED	SIZE	CODE	DWG NO	REV
CHECKED	B		WBA-4.00-1.10-AL-CC	B
DRAWN Andy Masters 10/8/2024	SCALE 1:1	WEIGHT	SHEET 1/1	