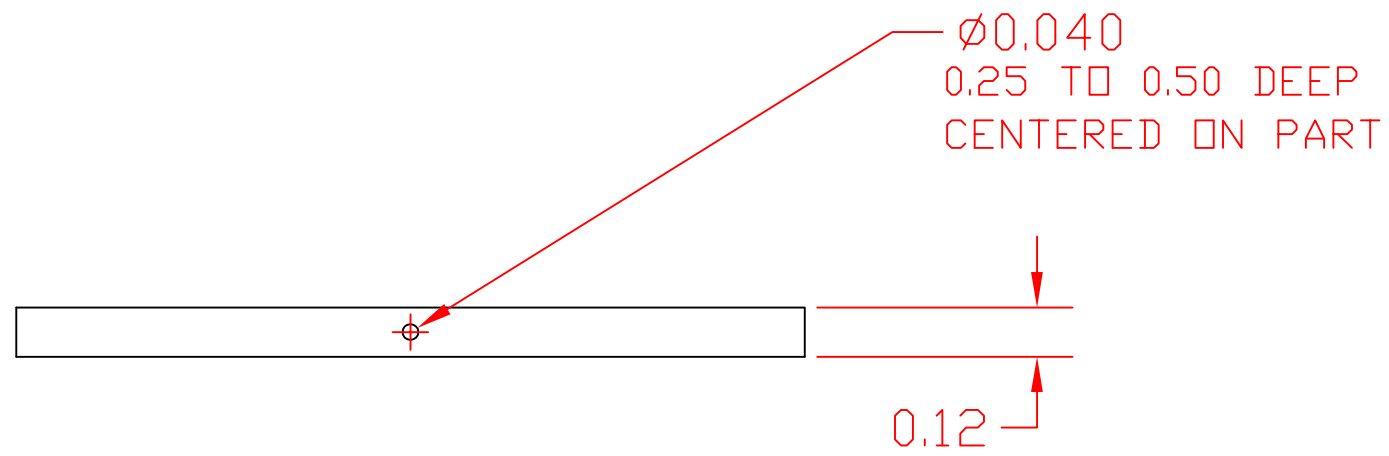



TOP VIEW



FRONT VIEW

NOTES:

- 1) MATERIAL: Alum. 6061 or equiv.
- 2) REMOVE ALL BURRS AND BREAK SHARP EDGES.
- 3) MACHINED FINISH ON ALL FACES

REV.	DATE	DESCRIPTION	REV.	DATE	DESCRIPTION	SCALE	 11941 Industrial Park Road, STE 5 Bishopville, Maryland 21813	THIS DOCUMENT IS THE EXCLUSIVE PROPERTY OF CUSTOM THERMOELECTRIC INC. AND THE INFORMATION CONTAINED THEREIN IS CONFIDENTIAL, PROPRIETARY INFORMATION OF CUSTOM THERMOELECTRIC. NEITHER THE DOCUMENT NOR ITS INFORMATION MAY BE DISCLOSED, COPIED, OR USED IN WHOLE OR IN PART WITHOUT THE PRIOR WRITTEN CONSENT OF CUSTOM THERMOELECTRIC INC.		
A	10/14/2009	Initial release				NOT TO SCALE			DRAWN BY	DATE
						FINISH	UNLESS OTHERWISE SPECIFIED ALL DIMENSIONS ARE IN INCHES & PER ANSI Y14.5 FRACTIONAL: $\pm .03$ DECIMAL: $\pm .XX .01$, $\pm XXX .005$ FILLET RADIUS: .010 MAXIMUM THREADS: CLASS 2 ALL DIAMETERS CONC. WITHIN .005 T. I. R. SURFACES TO BE PERPENDICULAR WITHIN .005 T. I. R. SURFACES TO BE PARALLEL WITHIN .005 T. I. R. HOLE ANGULAR TOLERANCE $\pm 0^{\circ} 5'$ ALL OTHER ANGULAR TOLERANCES TO BE $\pm 0^{\circ} 30'$ REMOVE ALL BURRS AND EDGES	A. Masters	10-14-2009	-
						NO. REQUIRED		TITLE COLD PLATE 2.0 X 1.0 X .12"		
						NEXT ASSEMBLY				
						CAD#				
						SIMILAR TO:				
This document was created in AutoCAD 2000 2D CAD. Electronic .DWG and .DXF files are available at vendors request. Call 443-926-9135 for more information.							SIZE	DRAWING NUMBER	SHEET	REV.
							B	CP-2.0-1.0-AL-01	1 OF 1	A